

Make your own wildlife camera!



#30DaysWild

The **My Naturewatch Camera** takes pictures and videos of birds and animals automatically when it sees movement. You can make your own from household materials and a few simple electronic components — no experience necessary! Go to mynaturewatch.net for easy-to-follow instructions and free software.

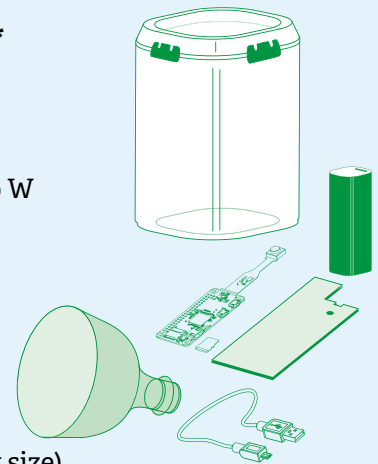
Some tips when using the camera:

- Using a wildlife camera can be like fishing: sometimes nothing bites. Be patient and keep trying!
- With a regular size USB battery the camera lasts up to one day. Having a spare USB battery can be handy for quick battery swaps so that you can leave the camera in the same location for a longer time (make sure that your camera is switched on when you change the battery).
- To avoid moisture collecting in your camera case, try adding some grains of rice.
- If you are putting food out to encourage animals to visit your camera trap, always make sure you are responsible. You can read advice on [The Wildlife Trusts' website](https://www.wildlifetrusts.org).

Build your own!*

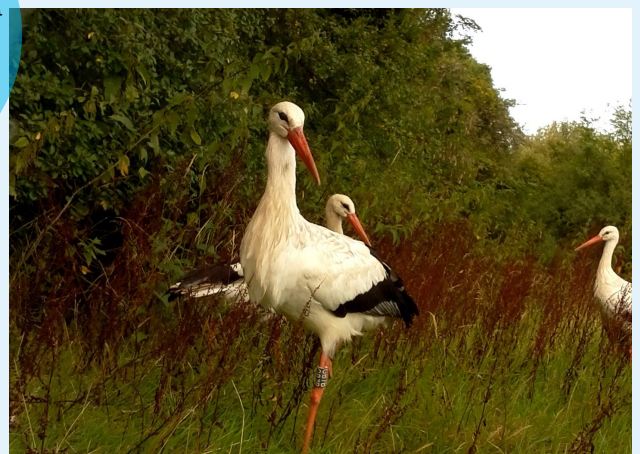
All you need:

- Food container
- Raspberry Pi Zero W
- Camera Module
- Micro SD Card
- USB power bank
- Cardboard
- Micro USB cable
- Drinks bottle (any size)

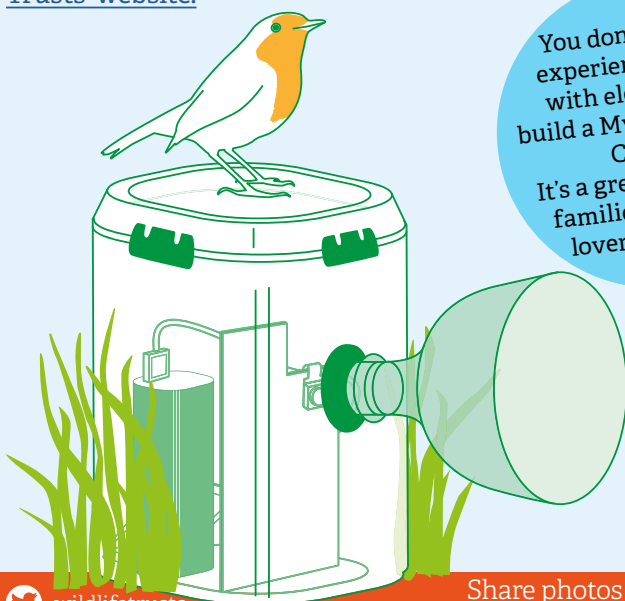


*For full instructions, head to mynaturewatch.net

Taken with a My Naturewatch Camera



You don't need any experience working with electronics to build a My Naturewatch Camera. It's a great activity for families and nature lovers of all ages!



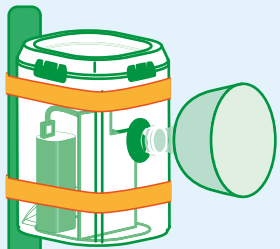
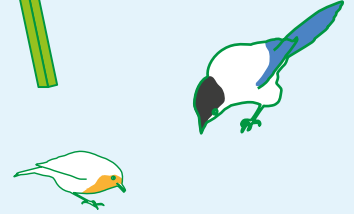
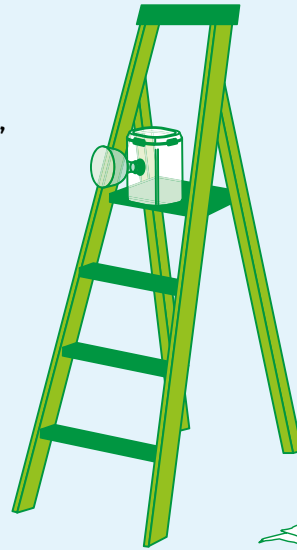
Share photos taken with your My Naturewatch Camera with us on social media:

#30DaysWild #Naturewatch

How to position your camera

Try different positions: close to the ground, near a bird feeder, hanging in a tree, on a fence, even underwater! You could experiment with mounting the camera to a structure, using things like tape and string. Think about fixing it on a ladder, to a stick, or attaching it to a tripod. You can connect to the camera with your mobile phone or tablet to test the camera angle you want.

We recommend using these camera kits on your own property, like your garden. If using it on land owned or managed by someone else, be sure to check whether you need permission first. Make sure to secure the My Naturewatch Camera appropriately to prevent it from tipping or falling, and always consider your own personal safety when placing the camera. Work with a buddy so that you can help each other out.



My Naturewatch Community

My Naturewatch is a non-commercial DIY project group, who love to find out where cameras have been made and what wildlife they've captured! There have been all kinds of experimental set-ups and enclosures - from housing the camera in a kilner jar and lowering it into water, to attaching it to a long pole to reach a tree top!

Share your experiences at mynaturewatch.net/forum

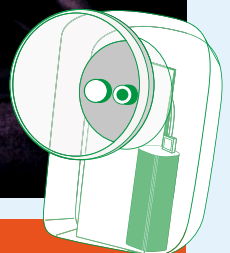


Camouflage ideas

You might want to camouflage the camera so it blends into the environment and looks less suspicious to some animals. You can attach leaves to the casing, cover it with camouflage tape or put it inside a hollow tree branch! Make sure that your camera stays waterproof in your camouflage enclosure.

Infra-red camera

The camera can be built with either a standard daylight camera module or an infra-red camera module, ideal for taking images at night time. The infra-red camera has two infra-red lamps in its module, make sure to test which distance works best with your set up and good luck!



Share photos taken with your My Naturewatch Camera with us on social media:



#30DaysWild #Naturewatch

Goldsmiths
UNIVERSITY OF LONDON

Royal College of Art
Postgraduate Art & Design

EPSRC
Engineering and Physical Sciences
Research Council