

# Classifying insects

*Action for Insects Session 2 — Resource 2*



How many legs  
does it have?

*Which are the insects? Which species groups do the others belong to?*



**NONE**



**SIX**



**EIGHT**

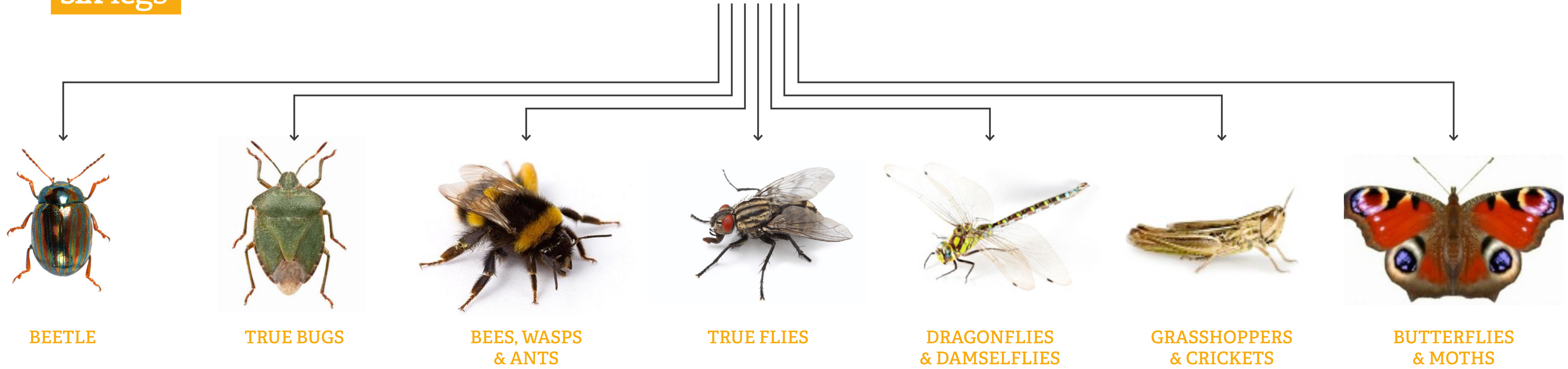


**LOTS**

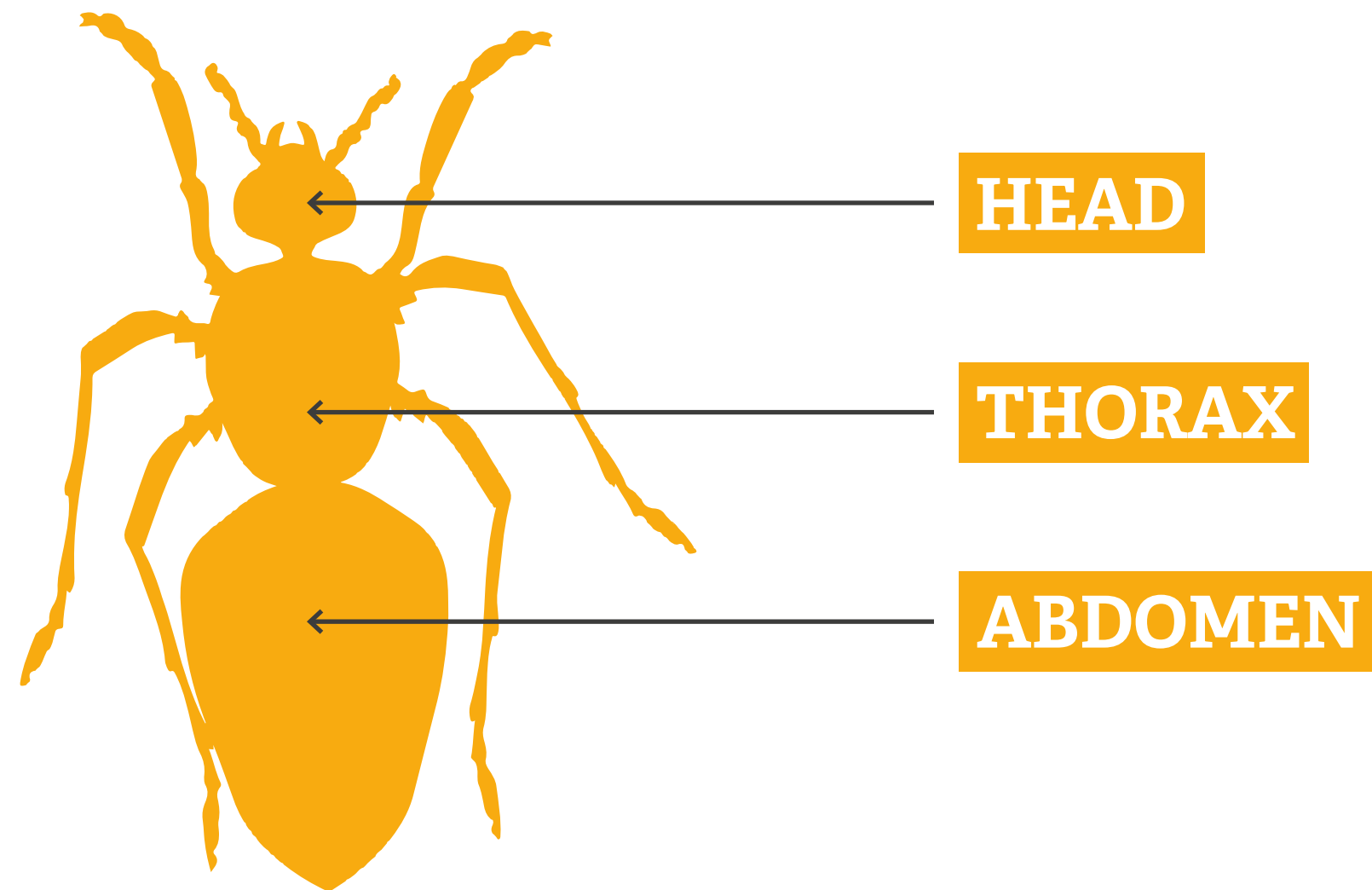


Insects have six legs

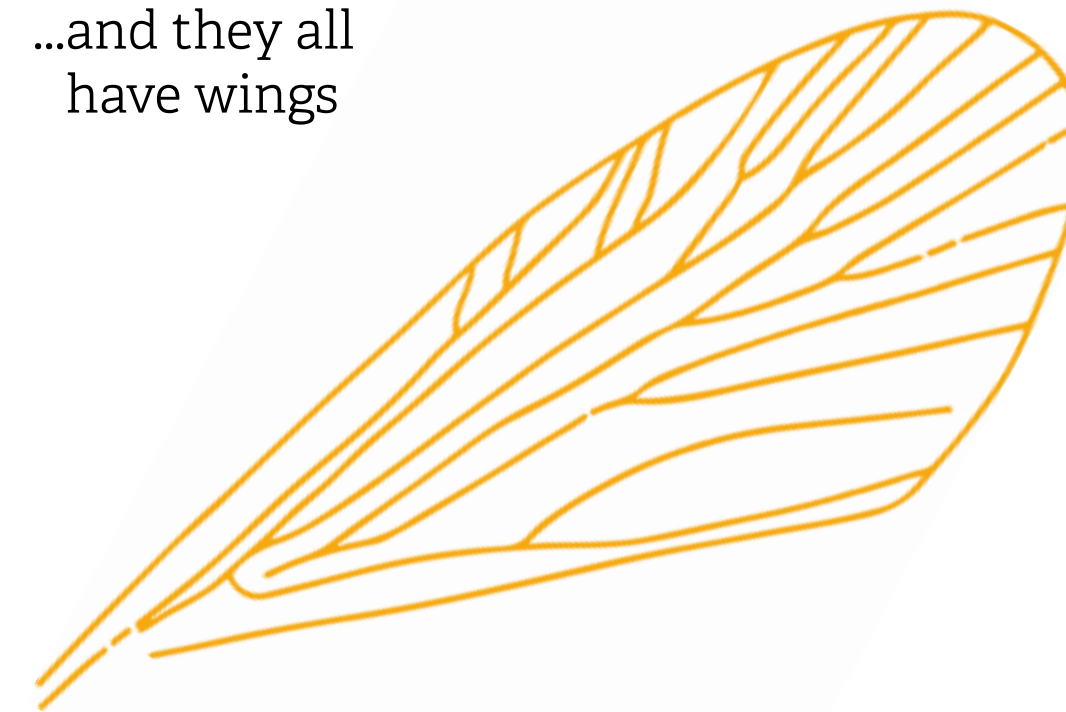
**INSECTS**  
*The largest group*



All insects share the same body design... (3 clear parts)

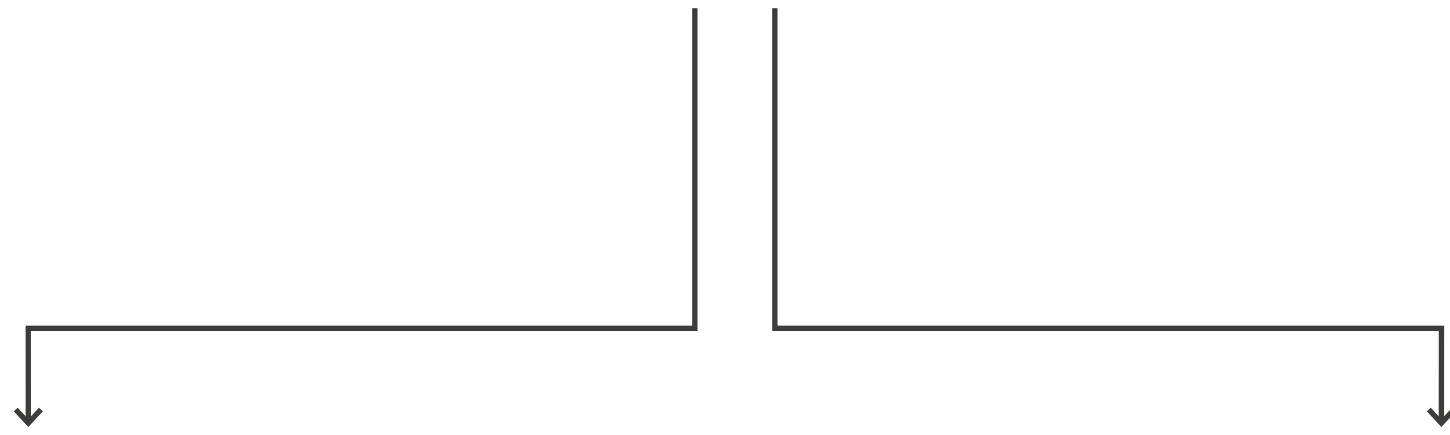


...and they all have wings



Other invertebrates  
have no legs

**MOLLUSCS**



**SNAILS**



**SLUGS**

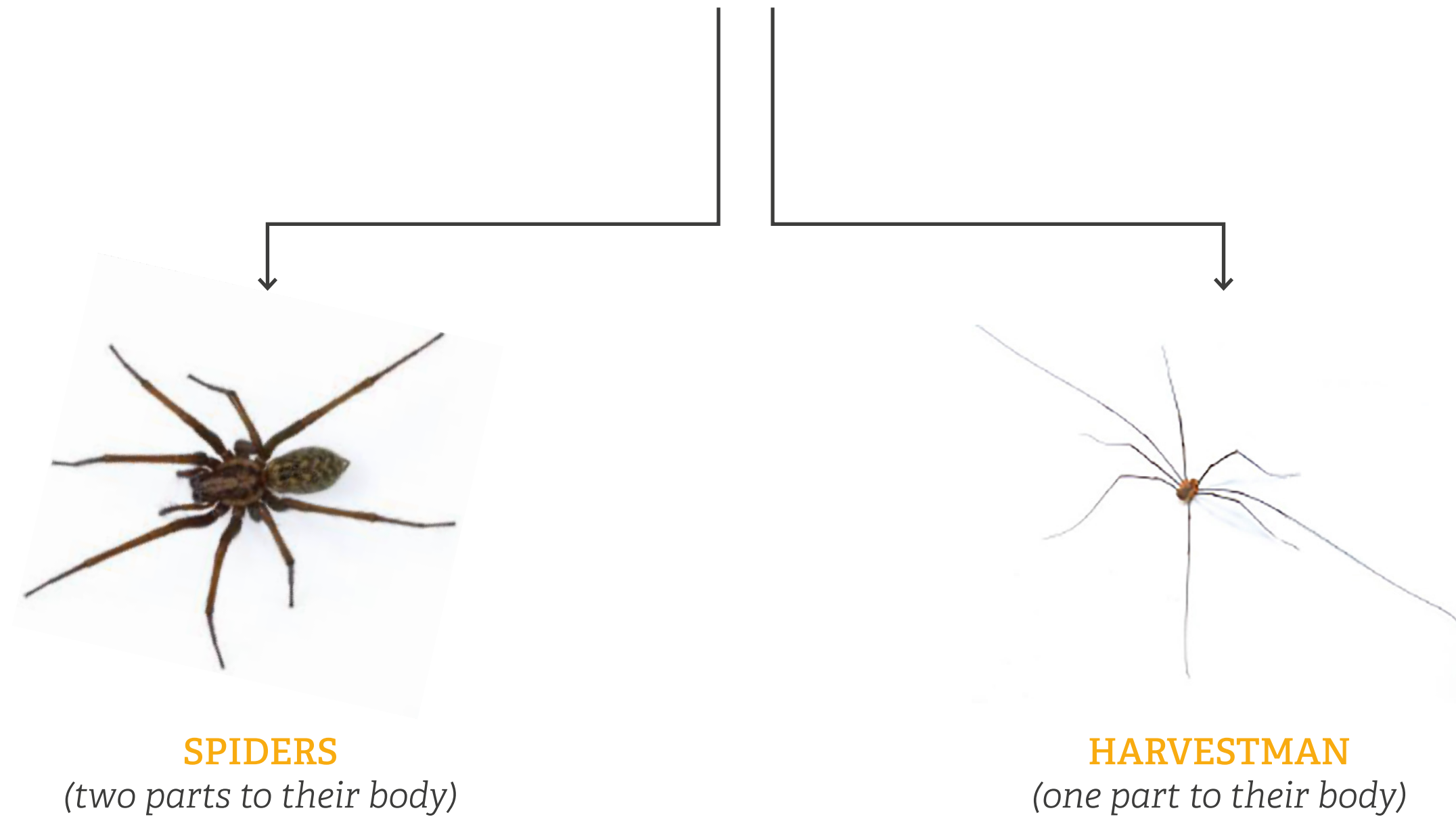
**ANNELIDS**



**EARTHWORMS**

Other invertebrates  
have eight legs

## ARACHNIDS





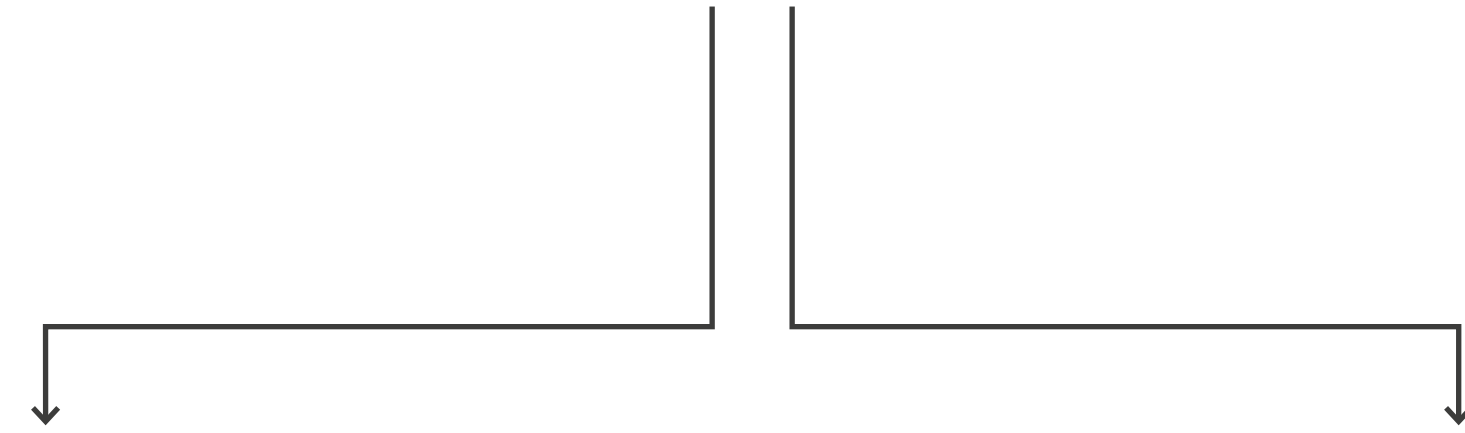
Other invertebrates  
have lots of legs

CRUSTACEANS



WOODLICE

MYRIAPODS



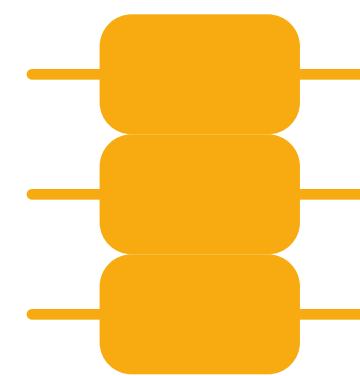
CENTIPEDES

*Different numbers of legs  
depending on which type  
(but never 100)*



MILLIPEDES

*Different numbers of legs  
depending on which type  
(but never 1000)*



The main difference  
between them is that  
centipedes have one pair  
of legs per body segment  
whereas millipedes have  
two pairs!

