

Inner Bank

Marine Conservation Zone (MCZ)



Lobster, Chris Wood

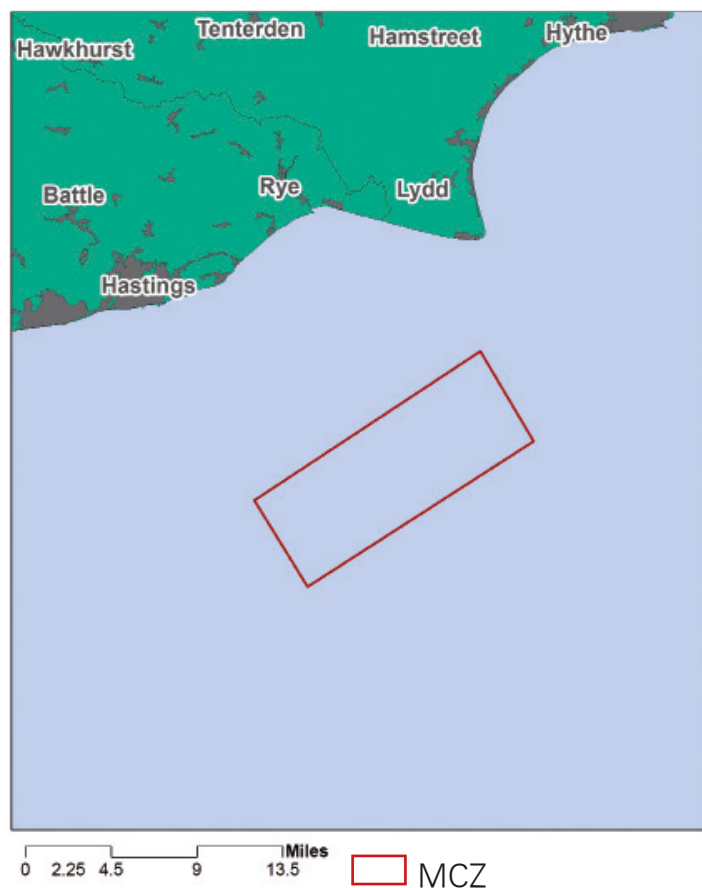
Fact file

This area lies due south of Dungeness point, in the English Channel shipping lane running inside the Bullock Bank.

Relatively rare for the South-East region, this area features significant areas of exposed rocky reef, lying at the end of the Palaeochannel (the geological remnant of an ancient river system). This rocky habitat supports a rich diversity of animal life, including beautiful blue lobsters.

Elsewhere in the area, the rock is covered by a thin veneer of sediment which comes and goes, leaving rocky exposures which can be colonised by a rich variety of animal species.

Location



Contains UKHO Law of the Sea data. Crown copyright and database right and contains Ordnance Survey Data Crown copyright and database 2012

wildlifetrusts.org/MCZ/inner-bank

Protecting Wildlife for the Future

Marine Conservation Zones



Inner Bank

199.03km²

Marine Conservation
Zone (MCZ)

Help us to protect our seas

UK seas have the potential to be some of the most wildlife rich on Earth, but ambitious protection is needed to reverse the decades of decline.

Great progress has been made in securing protected areas at sea but there's still work to be done.

With your help we can make sure that our Marine Conservation Zones and seas are given the protection they need to thrive once again!

- Join our supporters and become a Friend of MCZs today (it's free!)
wildlifetrusts.org/MCZFriends
- Find out more about other MCZs
wildlifetrusts.org/MCZs
- You can also send us any information or sightings from this MCZ to
marine@wildlifetrusts.org



The Wildlife Trusts

The Kiln, Waterside, Mather Road, Newark, NG24 1WT

Tel: 01636 677711 Fax: 01637 670001

wildlifetrusts.org



"The designation of the third tranche of Marine Conservation Zones has given us an amazing opportunity to protect our marine wildlife and habitats for future generations. We now have 91 MCZs which is great news, but to help our seas recover we also need the Government to implement proper management and monitoring of these sites."

Joan Edwards
Director of Living Seas
& Public Affairs
The Wildlife Trusts