

South-West Deeps (East)

Recommended Marine Conservation Zone (MCZ)



Status: Under Consideration



Plaice, Mark Thomas

Fact file

The eastern boundary of South West Deeps (East) is located approximately 170km off Land's End and the southern boundary aligns with the UK continental shelf limit. Within the boundaries the geologically important Celtic Sea relict sand banks are present; among the largest and deepest shelf sand ridges of their kind.

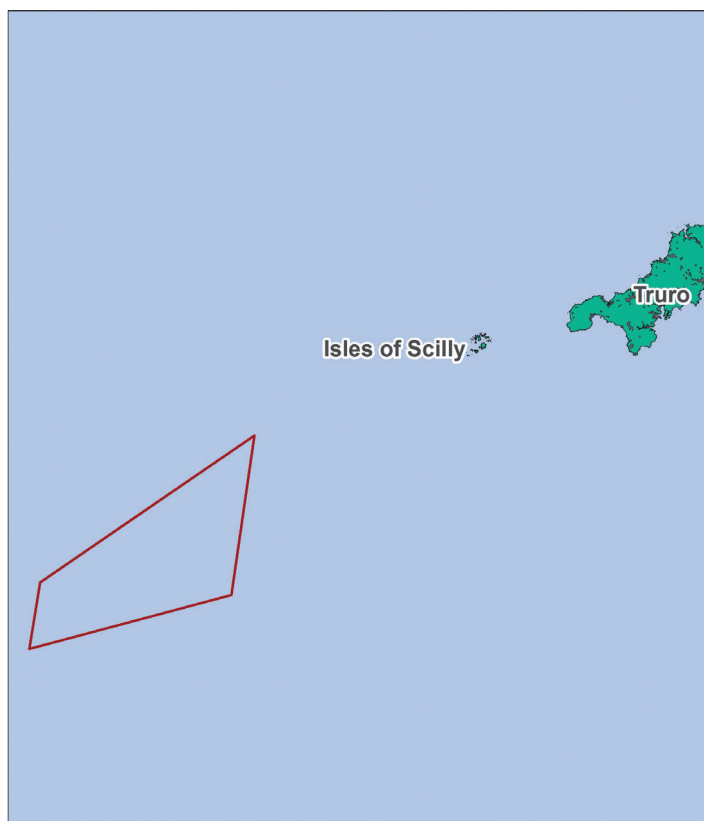
This site would fill an important gap for deep sea bed habitat, coarse sediments and sand. These habitats provide burrowing opportunities for important prey species, such as worms, and provide camouflage for many species of fish escaping predation!

A section of the continental shelf break is also found within the South-West Deeps (East), increasing the range of depths and ultimately the biodiversity of species living and visiting this area. Designation of this large site would represent a significant contribution to the network of marine protected areas around the UK.

Support this MCZ today!

wildlifetrusts.org/MCZ/south-west-deeps-east

Location

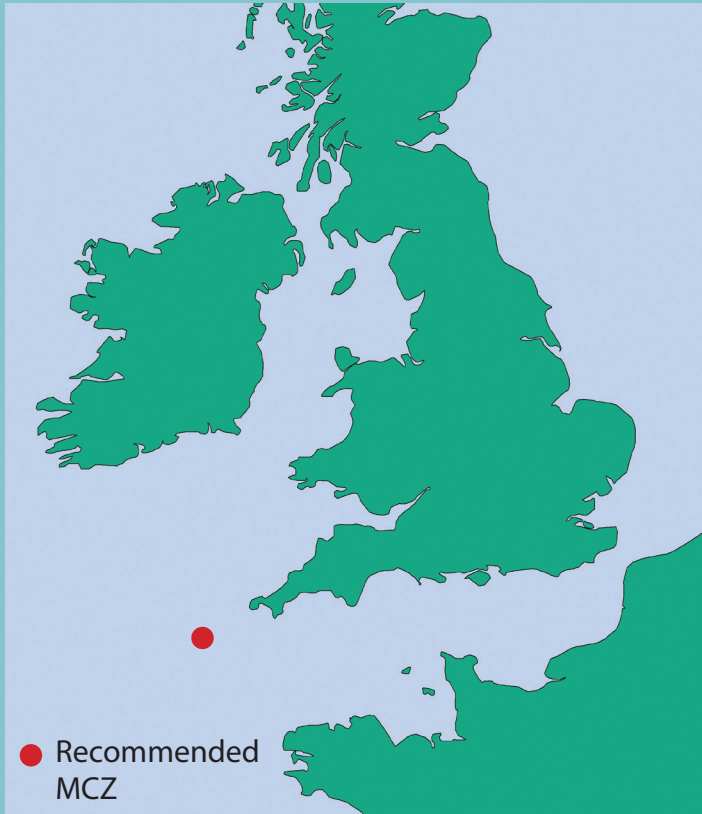


0 20 40 80 Miles

 Recommended MCZ

Contains UKHO Law of the Sea data. Crown copyright and database right and contains Ordnance Survey Data Crown copyright and database 2012

Recommended Marine Conservation Zones



South-West Deeps (East)

4653km²

Recommended Marine Conservation Zone (MCZ)

Help us secure more Marine Conservation Zones

UK seas have the potential to be some of the most wildlife rich on Earth, but ambitious protection is needed to reverse the decades of decline.

Great progress has been made in securing protected areas at sea but there's still work to be done.

With your help we can make sure that our seas are given the protection they need to thrive once again!

- Join our supporters and become a Friend of MCZs today (it's free!) wildlifetrusts.org/MCZFriends
- Find out more about Marine Conservation Zones. wildlifetrusts.org/MCZs
- You can also send us any information or sightings you may have of this MCZ to marine@wildlifetrusts.org



The Wildlife Trusts

The Kiln, Waterside, Mather Road, Newark, NG24 1WT

Tel: 01636 677711 Fax: 01637 670001

wildlifetrusts.org



"With proper protection, UK seas have the potential to be teeming with incredible life and colour, supporting thriving livelihoods and wildlife for generations to come. The return to Living Seas will, however, only be possible with an ambitious third tranche of Marine Conservation Zones."

Tony Juniper
President
The Wildlife Trusts