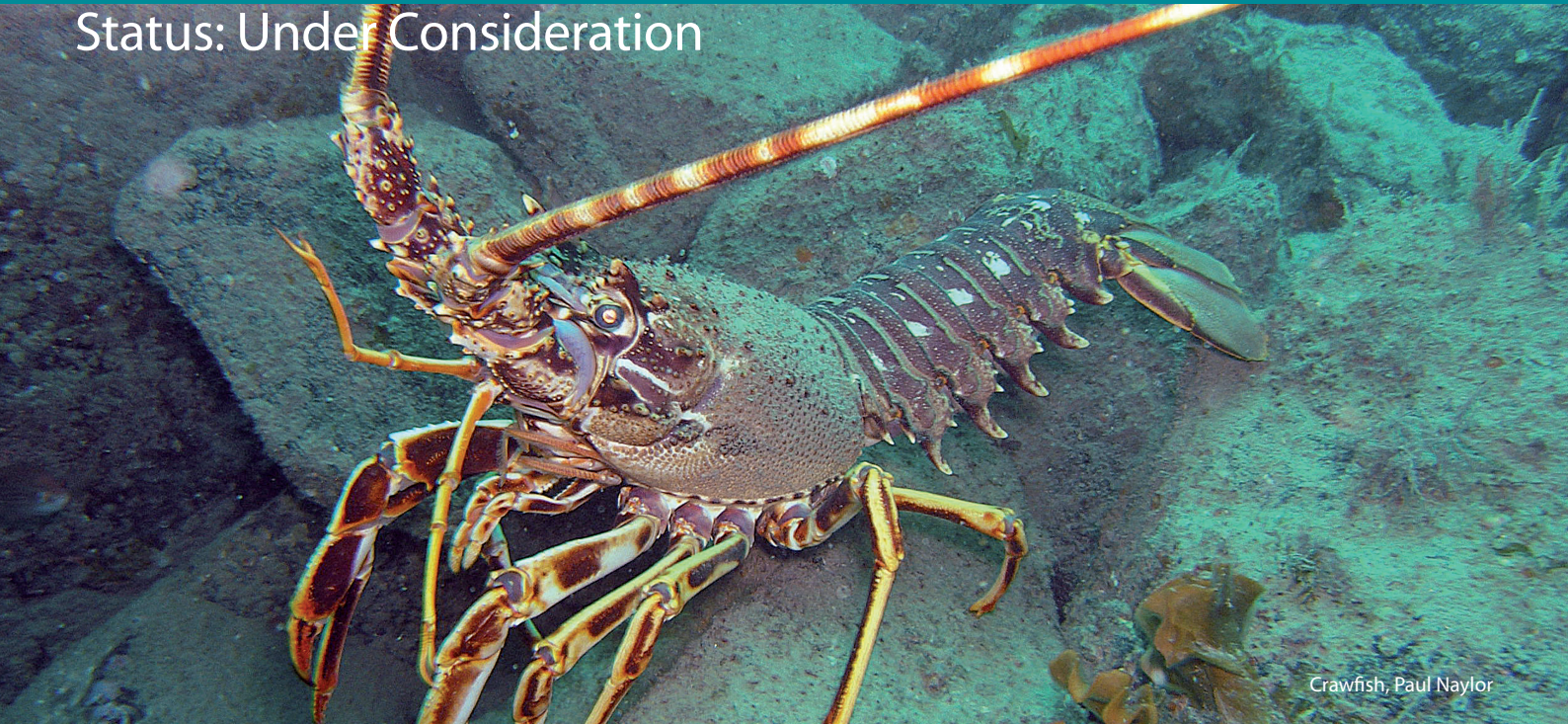


# Cape Bank

## Recommended Marine Conservation Zone (MCZ)



Status: Under Consideration



Crawfish, Paul Naylor

### Fact file

West of the Land's End peninsular lies the Cape Bank recommended MCZ. Located 25km from the coast, a variety of marine life, including many sponges and algal communities, make the fully submerged granite reefs here their home.

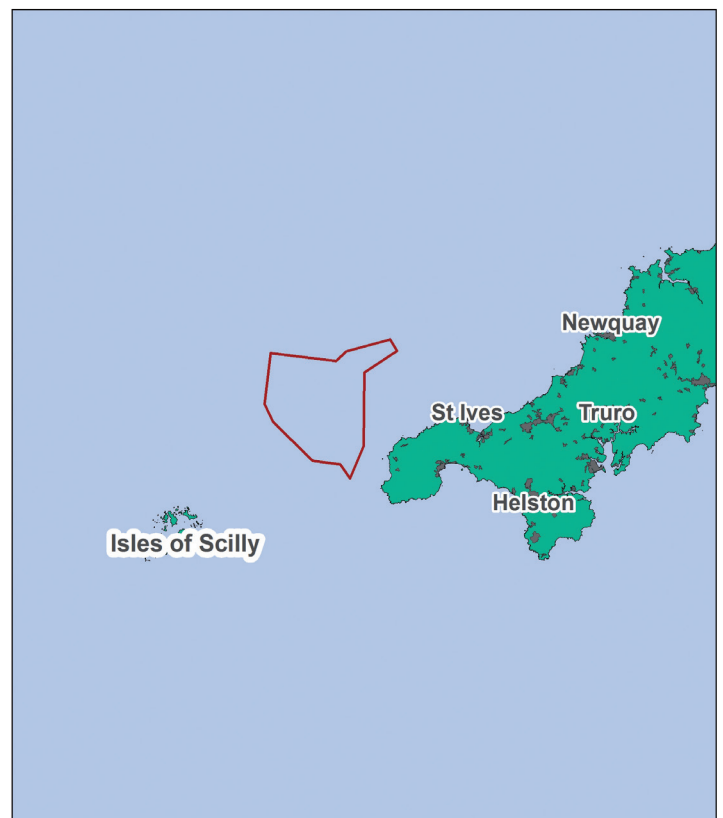
A large, crescent shaped rocky reef system is included within the proposed site. Extending to 12km at its widest part and around 35km in length, the reef is a feature of conservation importance. Many species live here including the commercially important crawfish (or spiny lobster), which use the nooks and crannies for shelter, and the Devonshire cup coral, which is often mistaken for an anemone due to its similar appearance.

Subtidal sediments at this site act as nursery grounds for fish species such as flatfish, seabass and sandeels. Designation of this site and its features would help to protect these ecologically and commercially important species.

### Support this MCZ today!

[wildlifetrusts.org/MCZ/cape-bank](http://wildlifetrusts.org/MCZ/cape-bank)

### Location



0 5 10 20 Miles

 Recommended MCZ

Contains UKHO Law of the Sea data. Crown copyright and database right and contains Ordnance Survey Data Crown copyright and database 2012



# Recommended Marine Conservation Zones



## Cape Bank

472.66km<sup>2</sup>

Recommended Marine Conservation Zone (MCZ)

## Help us secure more Marine Conservation Zones

UK seas have the potential to be some of the most wildlife rich on Earth, but ambitious protection is needed to reverse the decades of decline.

Great progress has been made in securing protected areas at sea but there's still work to be done.

With your help we can make sure that our seas are given the protection they need to thrive once again!

- Join our supporters and become a Friend of MCZs today (it's free!) [wildlifetrusts.org/MCZFriends](http://wildlifetrusts.org/MCZFriends)
- Find out more about Marine Conservation Zones. [wildlifetrusts.org/MCZs](http://wildlifetrusts.org/MCZs)
- You can also send us any information or sightings you may have of this MCZ to [marine@wildlifetrusts.org](mailto:marine@wildlifetrusts.org)



The Wildlife Trusts

The Kiln, Waterside, Mather Road, Newark, NG24 1WT

Tel: 01636 677711 Fax: 01637 670001

[wildlifetrusts.org](http://wildlifetrusts.org)



"With proper protection, UK seas have the potential to be teeming with incredible life and colour, supporting thriving livelihoods and wildlife for generations to come. The return to Living Seas will, however, only be possible with an ambitious third tranche of Marine Conservation Zones."

Tony Juniper  
President  
The Wildlife Trusts

