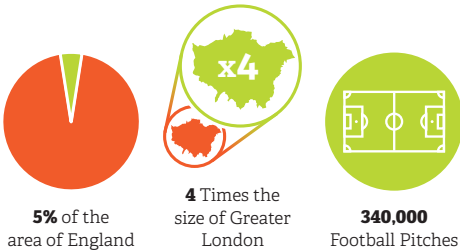


# The status of England's Local Wildlife Sites 2018



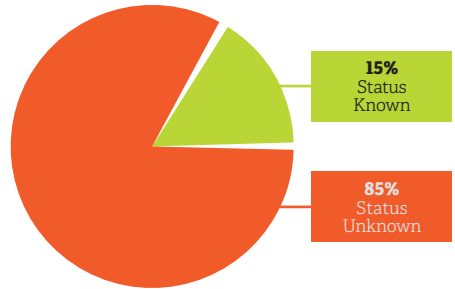
## How many Local Wildlife Sites are there?

**43,992 Sites**, totalling **611,000 hectares**.  
That's the same as...



## What state are they in?

For 85% of the 43,992 Local Wildlife Sites, their status is not known.



## What are the threats?

**Lack of management is by far the biggest threat to Local Wildlife Sites (LWS).** But the wrong kind of management and development also continue to present a significant threat in over half the LWS partnership areas.



Lack of Resources to identify, manage and protect Local Wildlife Sites **remains a major issue for 98% of responding partnerships.**



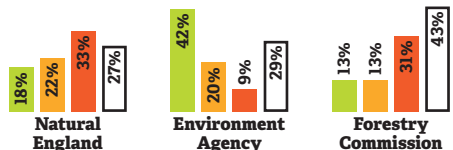
Of the 6,815 Sites we know were monitored, **12% were reported lost or damaged**

## Does the Government help?

**Natural England** is involved in at least 56% of LWS partnerships, the **Environment Agency** in at least 44%, and the **Forestry Commission** in at least 26%.



What % of partnerships believe **Statutory Agencies take LWS into account** when responding to planning/licensing applications.



## Local Government

Local authority financial contributions to Local Wildlife Site partnerships **range from £0- 30,000 per annum.**

The number of **local authorities (146)** making **no financial contribution** to their Local Wildlife Site partnership has **increased by at least 10%** since the 2014 survey.

