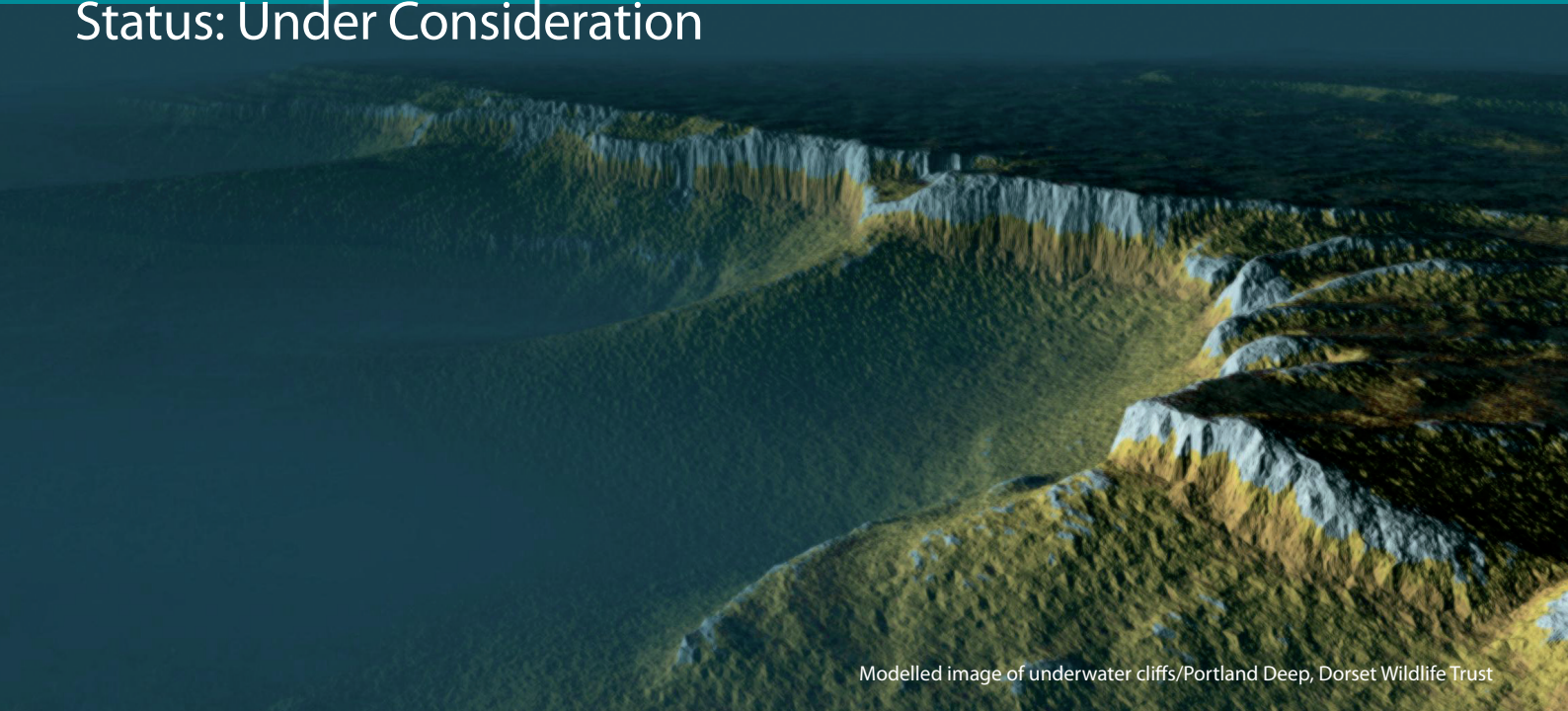


South of Portland

Recommended Marine Conservation Zone (MCZ)

Status: Under Consideration



Modelled image of underwater cliffs/Portland Deep, Dorset Wildlife Trust

Fact file

South of Portland recommended MCZ lies close to Portland Bill in an area of very strong tidal currents. These currents, called the Portland Race, have eroded deep depressions in the soft rock layers underlying Portland, creating a unique feature of geological importance, known as the Portland Deep.

Elsewhere, sand and coarse sediments have been sculpted into banks and ripples on the seafloor. The area is known to have a high diversity and unusual mixture of seabed life. Species such as reef-building worms inhabit the sandy areas, and anemones, urchins, sea cucumbers and starfish live in the rocky regions of this site.

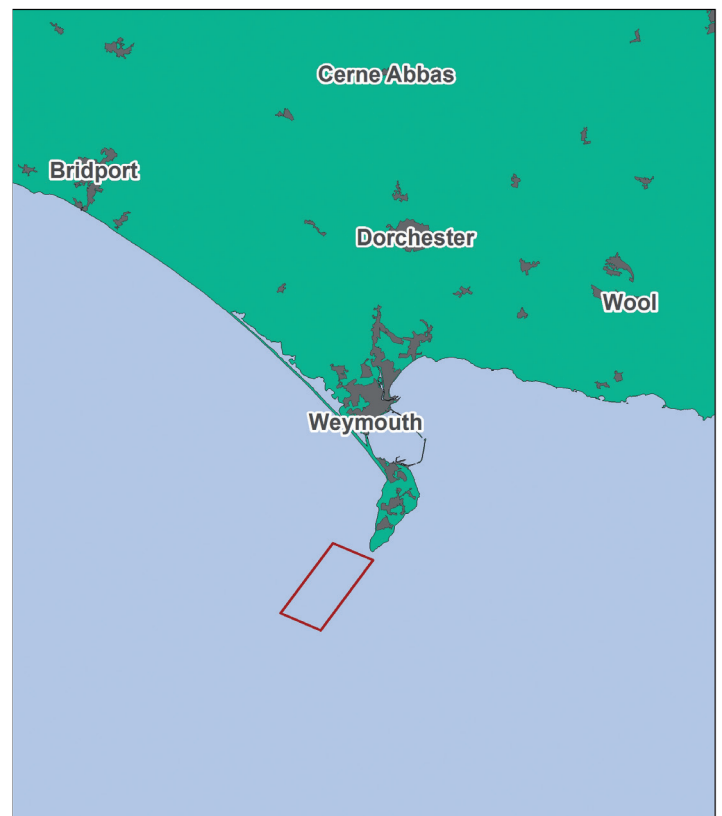
The site also includes an area of blue mussel bed known to provide a stable habitat for many other species to utilise for food and shelter.

Designation of this site would not only protect the species and habitats found here but also the geological features of the Portland Deep.

Support this MCZ today!

wildlifetrusts.org/MCZ/south-of-portland

Location



0 2.75 5.5 11 Miles  Recommended MCZ

Contains UKHO Law of the Sea data. Crown copyright and database right and contains Ordnance Survey Data Crown copyright and database 2012

Recommended Marine Conservation Zones



South of
Portland
17.5km²

Recommended Marine
Conservation Zone (MCZ)

Help us secure more Marine Conservation Zones

UK seas have the potential to be some of the most wildlife rich on Earth, but ambitious protection is needed to reverse the decades of decline.

Great progress has been made in securing protected areas at sea but there's still work to be done.

With your help we can make sure that our seas are given the protection they need to thrive once again!

- Join our supporters and become a Friend of MCZs today (it's free!) wildlifetrusts.org/MCZFriends
- Find out more about Marine Conservation Zones. wildlifetrusts.org/MCZs
- You can also send us any information or sightings you may have [of this MCZ to marine@wildlifetrusts.org](mailto:marine@wildlifetrusts.org)



The Wildlife Trusts
The Kiln, Waterside, Mather Road, Newark, NG24 1WT
Tel: 01636 677711 Fax: 01637 670001
wildlifetrusts.org



"With proper protection, UK seas have the potential to be teeming with incredible life and colour, supporting thriving livelihoods and wildlife for generations to come. The return to Living Seas will, however, only be possible with an ambitious third tranche of Marine Conservation Zones."

Tony Juniper
President
The Wildlife Trusts