

Kentish Knock East

Recommended Marine Conservation Zone (MCZ)

Status: Under Consideration



Catshark, Sharon Meadows

Fact file

The Kentish Knock is one of several impressive sandbanks lying relatively far offshore between Kent and Essex, out from the mouth of the River Thames.

The predominantly sand and gravel seabed contains a diversity of animals living within the sediment, while hermit crabs scuttle across the surface among small sand goby fish and foraging rays and catsharks.

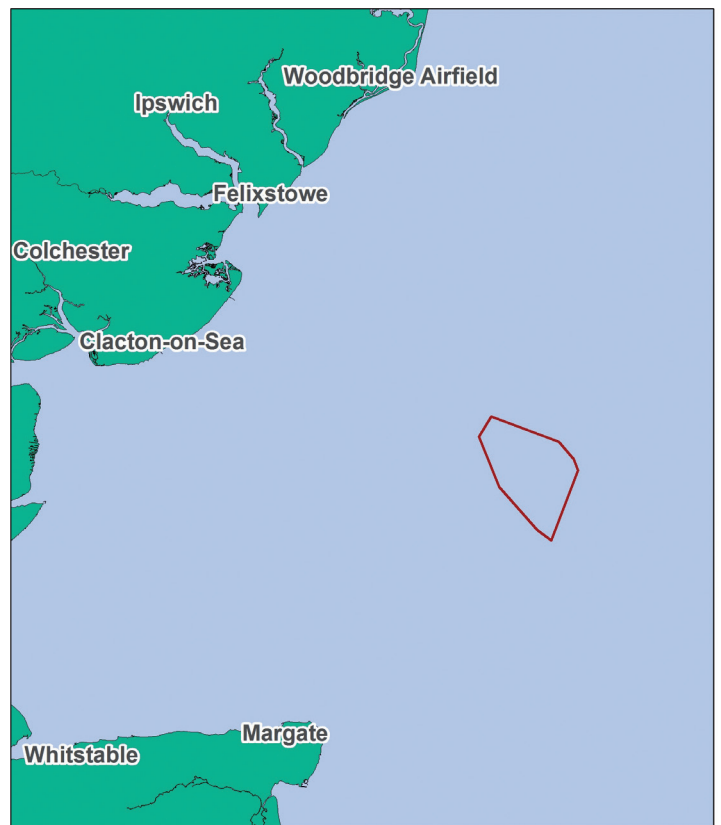
There are deeply gouged channels in the coarse sediment, ancient remnants of when the glacial floodwaters broke through from the North Sea. Designation of this zone would protect this feature and offer protection to ecologically and commercially important sandeel and flatfish populations.

The thermal water fronts here mean this is a productive area, with numerous species of fish living in mid water, witnessed by the many birds that come to forage for food around the sandbanks in both summer and winter.

Support this MCZ today!

wildlifetrusts.org/MCZ/kentish-knock-east

Location



0 3.25 6.5 13 19.5 Miles

Recommended MCZ

Contains UKHO Law of the Sea data. Crown copyright and database right and contains Ordnance Survey Data Crown copyright and database 2012

Recommended Marine Conservation Zones



Kentish
Knock East
96.3km²

Recommended Marine
Conservation Zone (MCZ)

Help us secure more Marine Conservation Zones

UK seas have the potential to be some of the most wildlife rich on Earth, but ambitious protection is needed to reverse the decades of decline.

Great progress has been made in securing protected areas at sea but there's still work to be done.

With your help we can make sure that our seas are given the protection they need to thrive once again!

- Join our supporters and become a Friend of MCZs today (it's free!) wildlifetrusts.org/MCZFriends
- Find out more about Marine Conservation Zones. wildlifetrusts.org/MCZs
- You can also send us any information or sightings you may have of this MCZ to marine@wildlifetrusts.org



The Wildlife Trusts
The Kiln, Waterside, Mather Road, Newark, NG24 1WT
Tel: 01636 677711 Fax: 01637 670001
wildlifetrusts.org



"With proper protection, UK seas have the potential to be teeming with incredible life and colour, supporting thriving livelihoods and wildlife for generations to come. The return to Living Seas will, however, only be possible with an ambitious third tranche of Marine Conservation Zones."

Tony Juniper
President
The Wildlife Trusts