

Foreland

Recommended Marine Conservation Zone (MCZ)

Status: Under Consideration



Lesser sandeels, Paul Naylor

Fact file

This area extends along the middle of the Channel between Kent and France, at the end of a geomorphological feature that evidences the megaflood which separated England from the rest of mainland Europe.

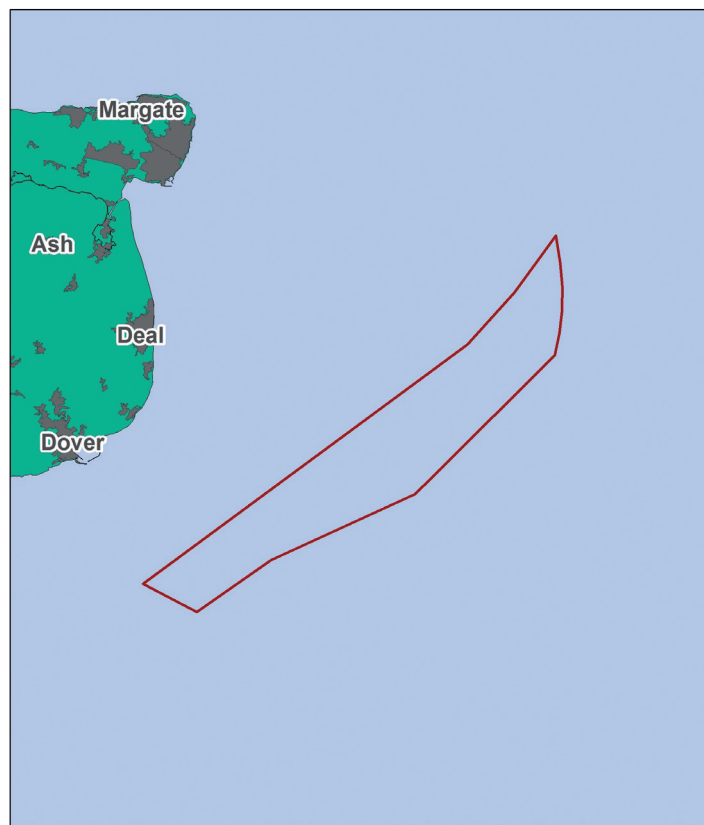
The seabed has deeply gouged channels where the flood water broke through. The area also contains rocky habitats, as well as impressive sand wave features where sandeels and weaver fish dart in and out of the sand and hermit crabs scuttle across the surface. Commercially valuable crustaceans such as lobsters and crabs shelter in this area.

This area of seabed, lying beneath the cross-channel ferry routes and above the channel tunnel, has an unusual complexity which supports distinctive communities of wildlife. Designation of this site would not only protect the array of species that live here including anemones, sea squirts and sponges, but also the ancient geomorphological flood feature.

Support this MCZ today!

wildlifetrusts.org/MCZ/foreland

Location



0 2.25 4.5 9 13.5 Miles  Recommended MCZ

Contains UKHO Law of the Sea data. Crown copyright and database right and contains Ordnance Survey Data Crown copyright and database 2012

Recommended Marine Conservation Zones



Foreland

244km²

Recommended Marine Conservation Zone (MCZ)

Help us secure more Marine Conservation Zones

UK seas have the potential to be some of the most wildlife rich on Earth, but ambitious protection is needed to reverse the decades of decline.

Great progress has been made in securing protected areas at sea but there's still work to be done.

With your help we can make sure that our seas are given the protection they need to thrive once again!

- Join our supporters and become a Friend of MCZs today (it's free!) wildlifetrusts.org/MCZFriends
- Find out more about Marine Conservation Zones. wildlifetrusts.org/MCZs
- You can also send us any information or sightings you may have of this MCZ to marine@wildlifetrusts.org



The Wildlife Trusts

The Kiln, Waterside, Mather Road, Newark, NG24 1WT

Tel: 01636 677711 Fax: 01637 670001

wildlifetrusts.org



"With proper protection, UK seas have the potential to be teeming with incredible life and colour, supporting thriving livelihoods and wildlife for generations to come. The return to Living Seas will, however, only be possible with an ambitious third tranche of Marine Conservation Zones."

Tony Juniper
President
The Wildlife Trusts